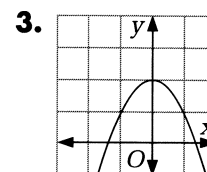
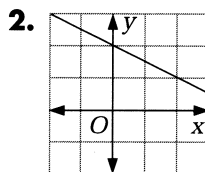
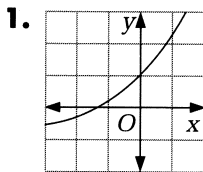


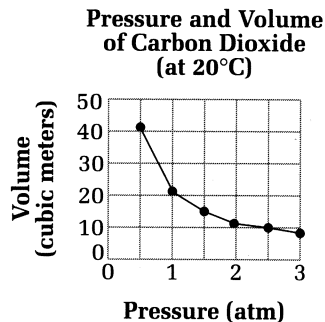
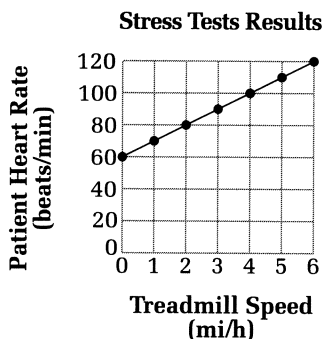
Practice 9

For use with Section 2-1

Tell whether each graph is an example of *linear growth*, *nonlinear growth*, *linear decay*, *nonlinear decay*, *a constant*, or *none of these*.



For Exercises 4–9, use the two graphs below.



- Which of the graphs is a decay graph? Which is a growth graph?
- What is the approximate heart rate at 3 mi/h for the patient in the stress test?
- At what treadmill speed is the patient's heart rate 110 beats per minute?
- What would the volume of the carbon dioxide be at a pressure of 0.8 atm?
- At what pressure is the volume of carbon dioxide 15 m³?
- Write inequalities to represent the domain and range for the two graphs.
- Suppose a rectangle has a perimeter of 40 cm. Let x represent the rectangle's width and y represent the rectangle's length.
 - Rewrite the formula $2x + 2y = 40$ so that y appears alone on one side of the equation.
 - Use a graphics calculator or graphing software to graph your equation, or use a table of values and graph paper. Is the graph a growth graph, a decay graph, or neither?